

AMBASSADOR COLLEGE • • • PASADENA, CALIFORNIA

VOLUME 17, NUMBER 24

WEEKLY

APRIL 5, 1968

# ACADEMIC CENTER DEDICATED



Mr. Armstrong addresses audience at dedication ceremony.

## Chancellor Armstrong Dedicates Academic Center In Memory of His Wife, Loma D. Armstrong

*Many Los Angeles County and Pasadena Officials Attend*

Wednesday, March 27, 1968 is a date that will stand out in the history of Ambassador College. It was on this day that the Founder and Chancellor of Ambassador College, Mr. Herbert W. Armstrong, dedicated the magnificent new classroom complex in memory of his lovely wife of fifty years, Loma D. Armstrong.

The dedication was attended by many of Mr. Arm-

strong's relatives, and officials from Los Angeles County and the city of Pasadena.

The dedication ceremony took place on the steps of the newly remodeled Ambassador Hall. The invocation was given by Mr. Armstrong and the welcome address by his son, Mr. Garner Ted Armstrong. Mr. Ted Armstrong then introduced the guest speakers for the ceremony. *(Continued on page 8)*





Published weekly by Ambassador  
College, Pasadena, California

**Faculty Advisor**  
DAVID JON HILL

**Editor**  
GEORGE L. JOHNSON

**Associate Editors**  
ORLIN GRABBE  
GERALD WESTON

**Sports Editor**  
MIKE BLACKWELL

**Photography**  
DONALD GRAUNKE

**Art**  
MONTE WOLVERTON  
PATRICIA JOHNSON

**Staff**  
Harry Eisenberg  
Pat Parnell  
Ernest Prociw  
Dannie Rogers  
Cheryl Vance  
Keith Walden  
John H. Walker  
Louis Winant

and YOU.

**Circulation Manager**  
GEORGE RITTER

The PORTFOLIO is a limited circulation  
publication. It is for the student bodies of  
Ambassador College. It is not to be sent  
home to friends and relatives.

© 1968 by Ambassador College  
All Rights Reserved



## "Perseverance"

"Oh—I hate that 600-yard walk-run!" How many of you have just recently uttered those same words? Here is a typical outlook of the 600 as someone "endures" it.

The first lap—all you can think of is what a great distance 2 and  $\frac{3}{4}$  laps are and how dumb it is to run around in circles. Then you find yourself entering the second lap, and you are begging your legs to go on and your lungs not to collapse. Finally you have made it to the last  $\frac{3}{4}$  lap, you are not sure why your legs keep moving but they somehow do. You see the finish line nearing and realize that you have made it after all. (Although you think your heart may burst or you will choke on the cotton in your mouth.) But isn't it funny, once it is all over with and you look back it really wasn't all that bad,

(Continued on page 7)

## Editorial

# AMBASSADOR WASN'T BUILT IN A DAY!

by George L. Johnson

Last Wednesday we witnessed the dedication of the beautiful new Loma D. Armstrong Academic Center. The event was certainly one of the greatest moments in the history of Ambassador College.

But the magnificent new complex, the beautiful grounds around it and the other new buildings being constructed weren't built overnight. They are the result of years of planning, patient waiting.

We students haven't seen the sacrifices that have been made. We only see the result of those sacrifices—those years of "just barely scraping by."

Even those of us who are seniors can't really say we attended college during the years of sacrifice, because the present building program began during our *freshman year*.

So let's go back to the founding of Ambassador College and see how it has grown. Let's look at the time of sacrifice, and realize that Ambassador wasn't built in a day!

Let's use the growth of the classroom facilities as our example.

When the college began in 1947, there was only ONE classroom building—the present library building. It was not only the classroom building, it was THE college!

The library building served well as a classroom. But as more and more students were accepted the space became more and more cramped. The small rooms soon filled to overflowing. They were hot and stuffy. It was difficult for students to stay alert and attentive during even the most interesting lectures.

Even though the building was overcrowded, classes were held there for the first *eleven years* of the college. Late in 1956 the college was able to purchase Ambassador Hall. But much work had to be done on it before it could be used for classes. It did not go into use as a classroom building until the fall of 1958.

During that school year the classes were able to "breathe" a little easier. But it wasn't long before they had outgrown Ambassador Hall.

The only room large enough to accommodate the "big" Bible Classes was the Rosewood Room. It was soon outgrown.

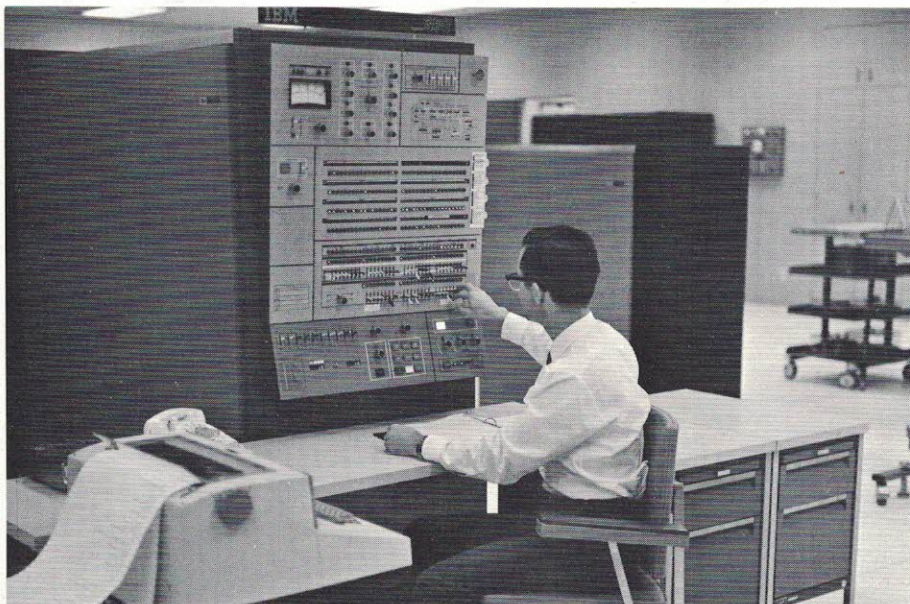
By 1960 the college had acquired the old assembly hall. It became the new home of the main Bible classes, the Forums, and Assemblies. The students had to be crammed like sardines into that room; the ventilation was bad, the lighting was poor, and many times the outside noise made hearing difficult.

The Student Center became the temporary home of many of the classes after the assembly hall was demolished to make room for the new Men's Residence. Even though the Student Center is an extremely beautiful building, the dining area was not designed to be a classroom.

Now after twenty years, Ambassador College classes have a magnificent new home. Truly, we are the students who have reaped the blessings that so many others have worked and prayed for.

Let's realize just how blessed we are to have these new facilities. And most of all let's be sure to use them properly.





Paul Paynter operates the giant new Model 50, master unit of our 360 System.

## DATA PROCESSING CENTER TAKES GIANT STEP FORWARD

Ambassador College recently increased the efficiency of its 360 IBM equipment with the addition of a model 50 processing unit.

This new model 50 is much bigger, faster, and far more powerful than the model 30.

The 50 is able to work with three totally different jobs simultaneously. For example, the model 50 can read cards, write them on magnetic tape, and print PLAIN TRUTH labels at the same time. This feat could be compared to a stenographer taking dictation from three different people at the same time. For even the most experienced stenographer that would be impossible, of course, but the 50 can do the three separate jobs with ease.

The "old" (one year) model 30 simply couldn't keep up with the ever increasing demands of this growing Work. But the 30 has not been put into "moth balls." It has been moved over to allow the new model 50 to share its components. The continued use of the model 30 will further increase the capacity of our IBM operation. It can perform separate tasks or do the job of data preparation for the bigger more complicated jobs on the 50.

Ambassador's Data Processing Center has the "baby" computer of the 360 range — the model 20. The 20 is used

for short-run, simple jobs which do not require access to the magnetic files or tape. The 20 is used presently to run the student payroll checks, grade reports, and the foreign PLAIN TRUTH labels.

Ambassador has teamed up all three 360 IBM processing units in a unique way — so unique in fact that IBM representatives bring prospective buyers from all over the country to see our operation!

### Mail Department Outing

## Joshua Tree Re-Visited

by Garry Pifer

What is 870 square miles in area, from 1000 to 6000 feet high and is located 150 miles east of Pasadena? If you happen to work in the Mail Department you will know immediately — Joshua Tree National Monument! Sunday, March 24, 1968, the Mail Department employees and guests journeyed eastward for their third annual Joshua tree outing.

As in past years the main attraction was climbing over, under, around and through the gigantic granitic rocks. (Those of you in geology class might be interested to know that most of

(Continued on page 7)

## Mr. Freibergs To Attend Cincinnati U.

by Harry Eisenberg

Recently, both the World History and Third Year Bible classes were told that Mr. Gunar Freibergs would not be with us next year. Rather, he will be taking classes at the University of Cincinnati.

The University of Cincinnati? One of the top Universities in the United States? But why?

Early this year Mr. Freibergs received notice that the University of Cincinnati was offering a number of scholarships. He sent in an application. Although a full scholarship was not granted, he will receive an assistantship (a partly paid scholarship).

This represents an important step forward for Ambassador College, because a major American institution has accepted our college credits.

At Cincinnati Mr. Freibergs will be concentrating on the subject of history, and hopes to be back to Ambassador within a year with a master's degree.

Mr. Freibergs came to Ambassador, Bricket Wood, after having worked as an engineer in Australia. After completing his studies there, and here in Pasadena, he was sent to assist Mr. Frank Schnee in Germany. And this year he came back to Pasadena to assist Dr. Hoeh.

So congratulations, Mr. Freibergs, on your acceptance to Cincinnati. Our very best wishes for success there. We'll be looking forward to having you back with us in 1969.



Mr. Freibergs.



# AMBASSADOR'S NEW LOMA D.



Mr. Armstrong greets visitors.



The Big Band provided the music.



Mr. Armstrong deliv...



# ARMSTRONG ACADEMIC CENTER

## Loma D. Armstrong 1891-1967

Mrs. Armstrong was like a mother to all of us students. Her door was always open to us in her sincere interest to get to know us and to help us in our growth toward becoming God's servants.

The New Academic Center, dedicated in her memory, will serve the students of Ambassador in the tradition she established.



Visitors inspect the Academic Center after Dedication.



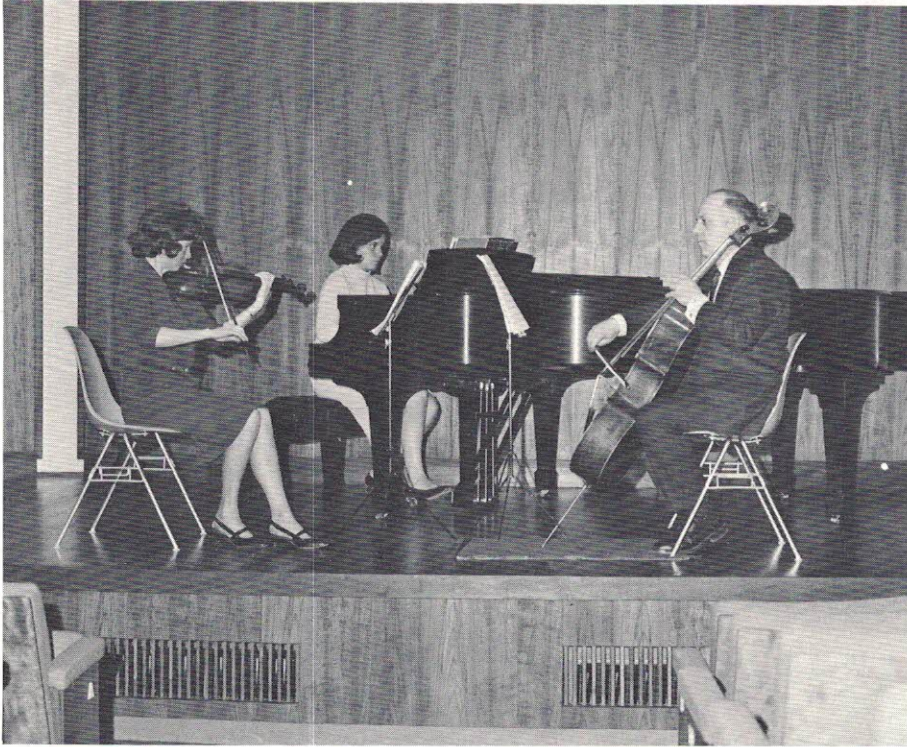
the keynote address.



Mr. Peter Holdstock (center) looks at displays set up in the Student Center for the reception.



## THE CHORALE COURIER



The Big Sandy chamber group, brought over for the dedication ceremonies, plays in new Recital Hall.

## THE CHORALE MOVES UP TO QUALITY

by Jerry Aust

The Chorale has moved from an Assembly Hall, to an ex-mortuary, to a beautiful Music Recital Hall — all in seven short months.

Your Chorale is the MOST blessed group of singers in this world.

That Assembly Hall left a little to be desired. (That desire has been fulfilled beyond our wildest imaginations.) It had a "split-level ceiling" with irregular air-conditioning. Don't misunderstand, it was adequate for our practices and we were thankful for it. For nine productive years it has served the Ambassador Chorale.

Then on to that sturdy-built ex-mortuary. We filled those four walls with music for nearly seven short months, thankful for this building also.

To make a long story short, we were blessed this month with the newly dedicated, impressive Recital Hall. The most accurate way to test our reaction to this beautiful new practice hall — although this is not the reason for its being built — is to ask any Chorale member what he or she thinks of it. This is QUALITY!

Need I say more?

## Quips and Clips

by Anita Judy

You've all heard of the fellow who cain't set down 'cause of ants in his pants. Well, the Chorale has a new and better excuse. "Mah soul is so happy dat ah cain't set down." Interested in finding out more? Then plan to attend the BIG spring concert on May 5!

Quotalé Quotes — Jerry Aust: (struggling to blast out his solo part): "Fetch me a waitaminute golden waistband. . . ." Mr. Prather (puncturing our billowing bigheadedness): "You are all amateurs — we know because you aren't being paid." Mr. Prather (attempting to put down that aggressive Ambassador ardor) — "Music is always slower than you think." Hmhhh. . .

What on earth?! Has the chorale retrogressed to kindergarten? A passer-by might think so. With our "let's go now . . . one . . . two . . . three . . . stamp . . . clap . . . stamp . . . clap. That's right." Then add a "chu chu"

## "...The Bases of Men"

by Jerry Aust

Would you believe the bases of men (are) in Chorale? True. Not a *woman* in Chorale sings bass (altho' some bases might question whether they — on occasion — have sung base).

Some of the bases are first bass and others sing second (or lower) bass.

Tim Sakach and Bill Bernt, Bob Fenstermacher and Chris French, John Hopkinson and Dave Odor are just some of our first bases.

Ray Meyer and Ben Whitfield, Al Gudeman, Felix Heimberg and Fred Teitgen are some of our second bases.

Now this may mean NOTHING to you but to the Chorale these bass men are absolutely essential. If you don't believe me, then just ask one of them.

On rare occasions the bases will split up in three parts: first bass, second bass, and third bass. This third bass is quite low. But Jim Lee — a knowledgeable bass fellow — decided he could ameliorate this situation and sing short stop. Needless to say, he is still on as first bass.

I appeal to you reader to get acquainted with these bass men. They are part of your Chorale.

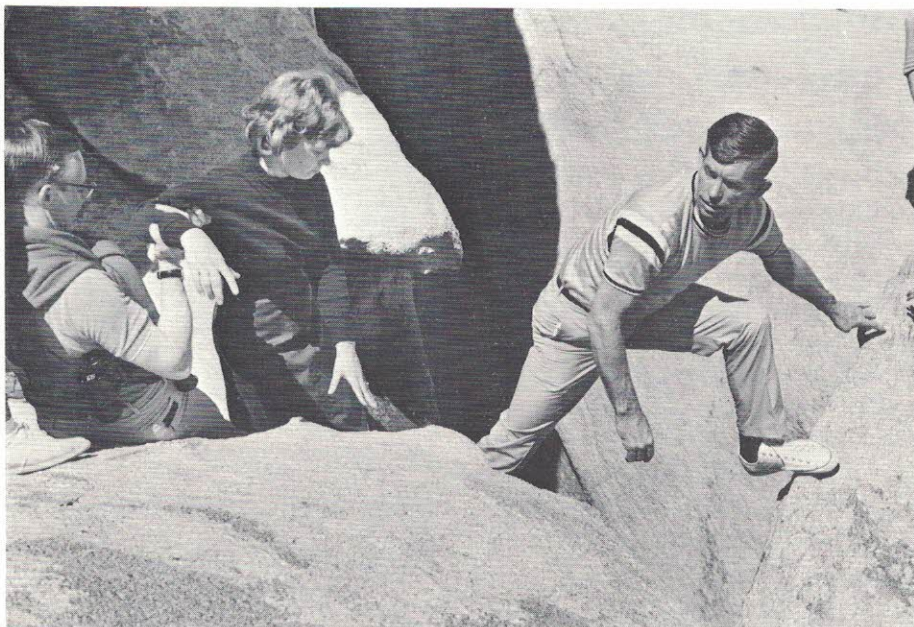
The bases really are of men!

in an ever-maddening speed and you've got it — the most spastic chorale number ever. Sigh.

Thoughts of a zealous Chorale member: "My! she really gives chorale her all. Why just look how she opens her mouth wide to get those notes out loud and clear. Hmmm. . . what a fine set of molars, and such an artful curve to her tongue. Whoops! It fell shut awfully quick — guess nobody can be expected to sustain an hour-long yawn!"

Who said all the chorale officers were bases (the bass-est of men)? Why Andrew Loath . . . er . . . Voth . . . is our head music passer-outer and everybody knows he has frequently been caught in the act of carrying the leading soprano part!





Some people will take a risk...

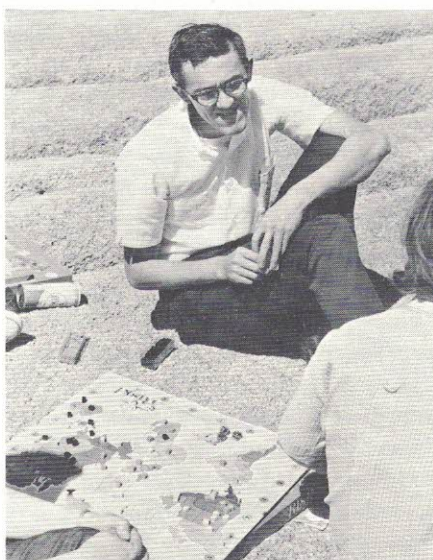
### Joshua Tree

(Continued from page 3)

those boulders are pinto gneiss and quartz monzonite.) As might be expected the rough sandpaper-like surfaces took their toll, such as skinned hands and knees and the nice, neat removal of trouser seats (just ask Mike Blackwell!).

At 1:00 p.m. everyone assembled in the Jumbo Rocks campground for lunch. Through the smoke one could discern figures like unto men walking about — sure enough, it was men, and they were co-o-o-o-oking (?) hamburgers! After partaking of this delicious gastronomical experience it was all that some could do to pull themselves to a shady rock and “relapse.” For others it was merely a fuel stop before taking off on further activities.

When departure time rolled around it was a bunch of red-faced and weary-



... while others just play it.

bodied people who headed homeward. Although physically tired they were filled with happy memories of a day in the desert playground of Joshua Tree National Monument.

# PIZZAZZ

## FUN! JOY!

**PIZZAZZ also can be . . .**  
**Studies in good and bad**

By Ernie Prociw

Having an Old Testament Survey paper due next morning and you haven't started it yet.

Going to class the next day finding it due *next* week.

Falling asleep in the soft classroom chairs.

Waking up finding yourself dreaming in bed.

Writing a paper for music class.

Turning it in for extra credit for second year Bible.

Finding out they're serving lamb for supper.

Getting invited out to a married student's home.

Having a second year Bible test next Monday.

Finding Mr. Ted Armstrong in class.

Working hard for a speech for Ambassador Club.

Using it for an impromptu in speech class.

Getting up in the morning, looking at the clock, realizing you're late for class.

Looking at the calendar, realizing you don't have class that hour.

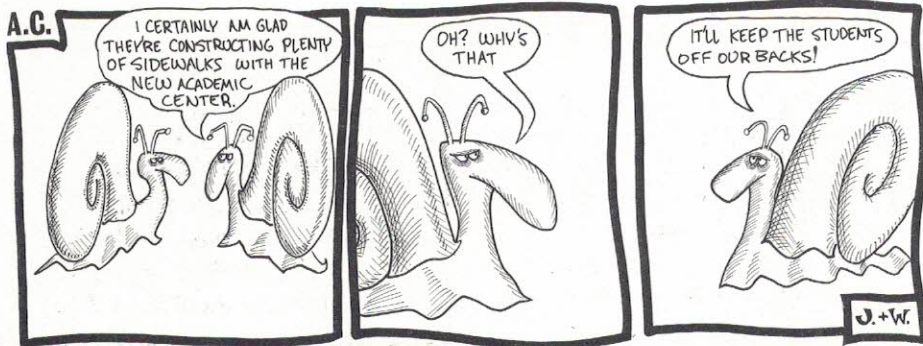
Knowing that your going to flunk journalism.

Finding your article in *The Portfolio*.

### Circular File

(Continued from page 2)

in fact you feel invigoratingly healthy and have an acute sense of accomplishment. It just goes to show you that Victor Hugo was correct in saying "People don't lack strength; they lack will."





## DEDICATION

(Continued from page 1)

First to give a brief comment was O.K. Earl, Jr., the chairman of the O.K. Earl Corporation. His firm was responsible for the design and construction of the building. He complimented those responsible for doing such a fine job. A big hand was given to all these men, and especially Peter J. Holdstock the senior staff architect, who was responsible for the design of the buildings.

Carl H. Hoelscher, the President of the Pasadena Chamber of Commerce, gave a brief comment on how much Ambassador has done for the community.

Mr. Warren Dorn, the Los Angeles County Supervisor, said that he would do all he could to help Ambassador College become the best college of its kind.

The keynote address was given by Mr. Armstrong. He told how Ambassador College is doing as much as possible to make Pasadena more of a cultural center. He went on to explain in detail just how much of a contribution the college has made to the community.

"A noteworthy transformation is taking place in the west side of Pasadena. This remarkable development is exciting much comment. Many would like to know more about the institution responsible for this outstanding project of beautification which is saving the taxpayers millions of dollars.

"Most Pasadena citizens are aware of the CRA (Community Redevelopment Agency), set up by the government as an agency to draw on tax funds to plan and bring about urban renewal for community beautification. Ambassador College cooperated fully with the CRA, submitting to them the college Master Plan, designed by the world-known firm of architects and engineers, Daniel, Mann, Johnson and Mendenhall, for its new \$16,000,000 expansion program in the area bounded by South Orange Grove Boulevard, Green Street, Vernon, and Del Mar. The CRA approved the college Master Plan, and work has been progressing rapidly, financed solely by the college,

## Ambassador Hosts Pasadena Central Improvement Ass'n.

Tuesday afternoon over 60 local businessmen and property owners gathered in the Student Center for the regular meeting of the Pasadena Central Improvement Association. Host and guest speaker for the occasion was Mr. Garner Ted Armstrong. The Association is devoted to the improvement and beautification of the greater Pasadena area. In addition the members are interested in the growth and development of the areas immediately adjacent to the college campus.

During the course of the meeting each member was introduced and gave a brief statement of the purposes of his enterprise or firm. Some of the local businessmen in attendance included some of our neighbors such as Mr. Peter Satori, Mr. Thomas Sturges the owner of Sturges Pharmacy, and various owners of the Orange Grove Apartments. Messrs. Portune, Brown, and Plache also represented the College.

For the main part of the meeting, Mr. Ted Armstrong gave a talk on the purpose and aims of Ambassador College. He further explained how the college has significantly contributed to the culture and appearance in Pasadena. Following his talk, Mr. Armstrong opened the floor for questions. A fine response was evident, as the questions came thick and fast. After the meeting Mr. Charles Oehlman and Mr. Bob Haworth conducted our guests on a campus tour.

The meeting proved to be a boon for Ambassador College's public relations. Our guests were very favorably impressed by what they saw and heard.

saving millions of dollars of tax funds."

After a closing statement by Mr. Ted Armstrong those attending the dedication were invited to tour the new buildings. Refreshments were served in the beautiful Student Center.

The dedication was a big day in the life of all those connected with Ambassador College.



**Dedication Concert**

## Piano Performance In Fine Arts Hall

by Monte Wolverton

The new Fine Arts Recital Hall was the scene of a duo-piano performance by Mrs. Lucy Martin and Mr. Gary Prather Wednesday evening, March 27, and Thursday evening March 28. The two performances were held in conjunction with the opening of the new Loma D. Armstrong Academic Center.

The program consisted of works by five composers. Rachmaninoff's *Suite No. 2, Opus 17*, with its four contrasting moods started off the evening. The second part, in a lighter vein, consisted of *three Jamaican Street Songs* by Arthur Benjamin. Next were works by two Spanish composers, *Granados' Quejas o La Maja y El Rusenor*, from *Goyescas*, and *Dances Andalouses, Gracia*, from *El Vito* by Manuel Infante. The well-known *Concerto in A Minor, Opus 16, First Movement*, by Grieg ended the program.

But there was more to come. For an encore on both evenings, Mrs. Martin and Mr. Prather played several selections from Gershwin's *Porgy and Bess*.

The evening was thoroughly enjoyed by all who attended.

**RECITAL  
of  
VOCAL AND  
INSTRUMENTAL MUSIC**

Fine Arts Recital Hall  
Loma D. Armstrong Academic  
Center

Sunday Evening, April 7, at 7:30